



Adoris

Your STEELWORK Partner

ON-SITE & IN-HOUSE

info@adoris.lt
+370 630 11 333

www.adoris.lt
Klaipeda, Lithuania

FIELDS OF EXPERTISE

A close-up photograph of a welder wearing a blue protective helmet and gloves, focused on welding a metal component. Bright orange sparks are visible at the point of contact between the welding torch and the metal.

- **Welding & Assembly Services**
- **Metal Structures Manufacturing**
- **Pipeline Production & Installation**
- **Surface Treatment & Painting**
- **Skilled Workforce Solutions**

ADORIS is a family-owned company established in 2009 and operating in the Klaipėda seaport industry, specializing in providing comprehensive solutions for the metalworking sector.



SHIPBUILDING & SHIPREPAIR



OFFSHORE & WIND



OIL & GAS



METAL STRUCTURES & MANUFACTURING



- All types of welding work
- Assembly work
- Surface treatment & painting
- Outfitting
- HVAC & heavy ducts
- Pipes

SHIPBUILDING & SHIP REPAIR



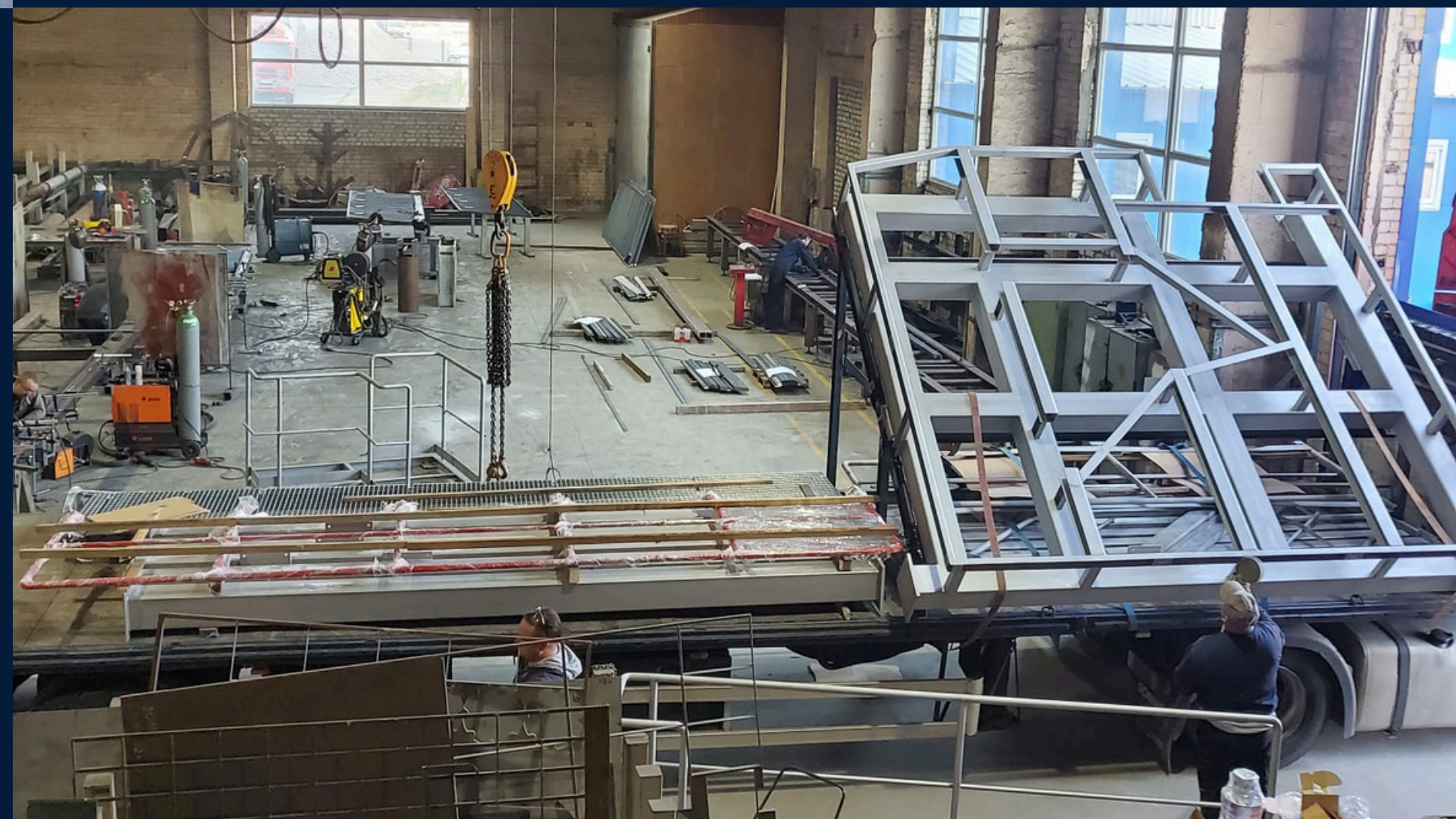


METAL STRUCTURE MANUFACTURING

- Structural steel construction
- Stainless steel constructions
- Bridges structures
- Containers
- Pipes
- Tanks

- Frames
- Steel frame structures
- Metal staircases
- Stairs & railings
- Reels
- Etc.

All steel works: installation, repair and maintenance



OFFSHORE & WIND

Production:

- Foundations
- Baskets
- Frames
- Sea-fastenings
- Platforms
- Stairs and Railings
- Reels
- Etc.

All steel works: installation, repair and maintenance



OIL & GAS

- Pipelines
- Piping
- HVAC
- Storage tanks
- Platforms and rigs
- Drilling equipment

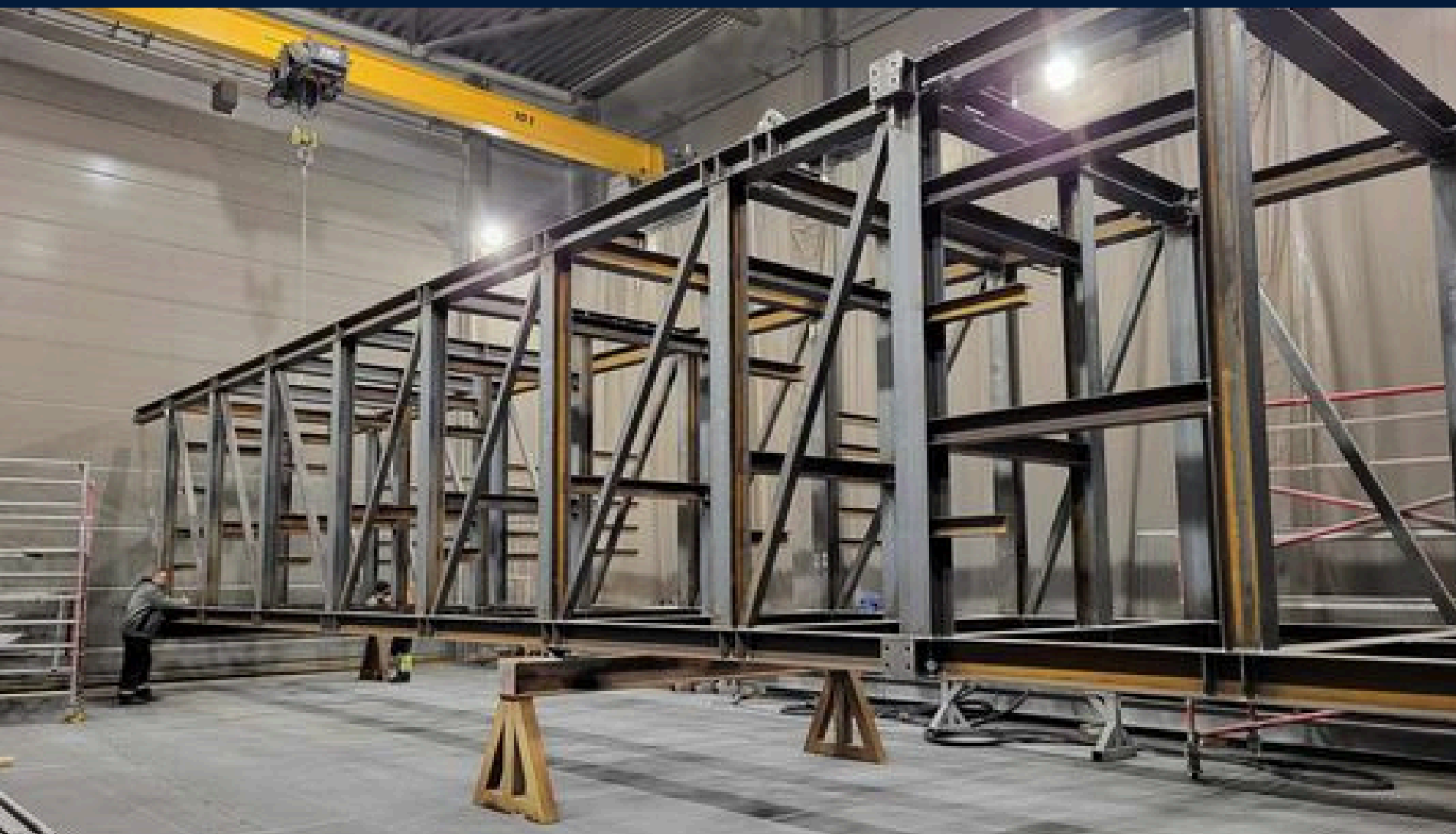
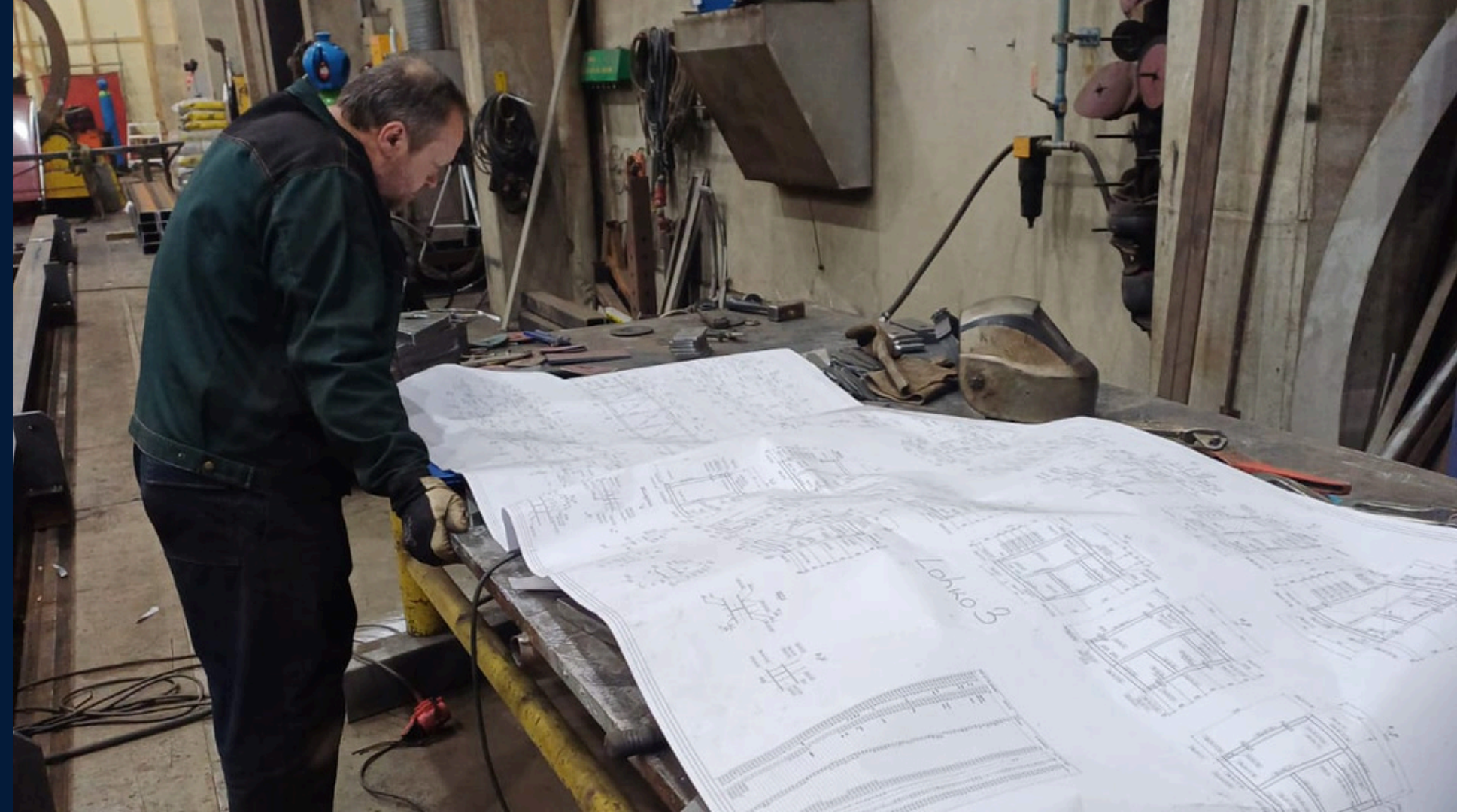
COMPLETE WORKFORCE SOLUTIONS

- Welders
- Assemblers
- Pipe fitters
- Pipe welders
- Builders
- Spray painters
- Electricals
- Outfitters
- Riggers
- Others

Our partner network consists of trusted suppliers, experienced contractors, and committed partners, providing outsourcing services.



PRODUCTION FACILITIES IN LITHUANIA



- 12.000m² of production area under the roof
- Assembly and welding workshop
- Machining workshop
- Blasting chamber
- Wet painting workshop

KEY REFERENCES

Meyer Turku Shipyard (Finland)

Rauma Marine Constructions (Finland)

Arctech Helsinki Shipyard (Finland)

Nagasaki Shipyard (Japan)

Western Shipyard (Lithuania)

Baltija Shipyard (Lithuania)

Tallin Shipyard / BSRZ (Estonia)

Riga Shipyard (Latvia)

Antwerpen Shipyard (Belgium)

Damen Shipyards Group (The Netherlands)

Holland Shipyards (The Netherlands)

De Hoop Shipyard (The Netherlands)

Keppel Verolme BV (The Netherlands)

Neptun Werft GmbH (Germany)

Harland and Wolff Heavy Industries (GB)



COMPETITIVE ADVANTAGES & CLIENT BENEFITS



- *15 years experience in the metalworking industry*
- *Compliance with ISO and other industry standards*
- *Reliable suppliers, contractors, and partners*
- *Operations worldwide*
- *Quality Assurance*
- *Robust Supplier Relationships*
- *Cost Optimization*





RELIABILITY PROVEN OVER THE YEARS

info@adoris.lt

+370 630 11 333

www.adoris.lt

Klaipeda, Lithuania



Adoris